



Total Solution Provider in Saw Device

SA1842CL1

PCN, Balanced RF SAW Filter
Revision 0:



- Electrical Characteristics
 - Package Dimensions
 - Testing Environment
 - Frequency Characteristics
-

SAWNICS Inc.

460 Cheonheung-ri, Seonggeo-eup, Cheonan-si, Chungcheongnam-do, 330-836 / Korea.
Tel: +82 41 550 9372 / Fax: +82 41 550 9399 / www.sawnics.com

**□ Electrical Characteristics****Maximum Ratings**

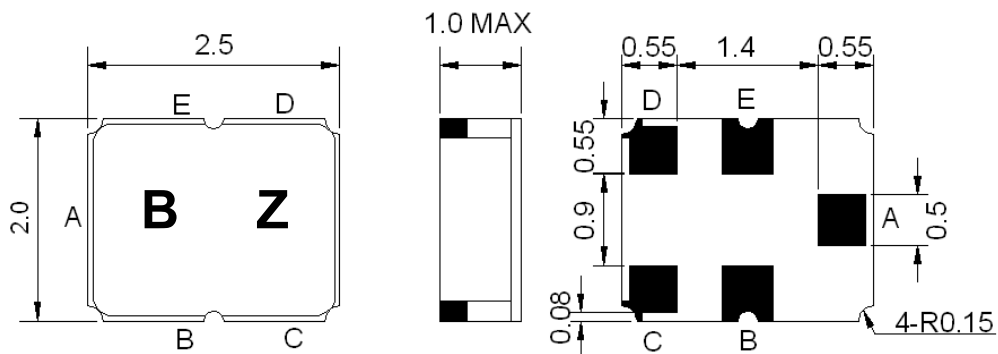
Parameters Description	Unit	Minimum	Typical	Maximum
Operating Temperature Range	°C	-20	-	+75
Storage Temperature Range	°C	-40	-	+85
Maximum DC Voltage	V	-	-	5
Maximum Input Power	dBm	-	-	12
Source Impedance (single ended) ⁽¹⁾	Ω	-	50	-
Load Impedance (balanced ended) ⁽¹⁾	Ω	-	200//18nH	-
Package type & size	L1			
Length x Width	mm ²	-	2.5 x 2.0	-
Height	mm	-	-	1.0

Electrical Specification

Parameters Description	Unit	Minimum	Typical	Maximum
Center Frequency (Fo)	MHz	-	1842.5	-
Insertion Loss within 1805~1880MHz	dB	-	2.8	4.0
Amplitude Ripple within 1805~1880MHz	dB _{p-p}	-	0.7	1.5
Attenuation:				
D.C. ~ 1200 MHz	dB	40	48	-
1200 ~ 1705 MHz	dB	30	33	-
1705 ~ 1785 MHz	dB	9	14.5	-
1920 ~ 1980 MHz	dB	10	22.5	-
1980 ~ 2200 MHz	dB	20	23.5	-
2200 ~ 3000 MHz	dB	30	36	-
3000 ~ 6000 MHz	dB	40	44	-
Input / Output VSWR within 1805~1880 MHz	-	-	2.0	2.5
Symmetry in band (1805~1880 MHz)				
Output Amplitude balance(S31 / S21)	dB	-1.8	0	1.4
Output phase balance(Φ(s31)-Φ(s21)+180)	degree	-12	0	12

Notes : (1) With Matching Network

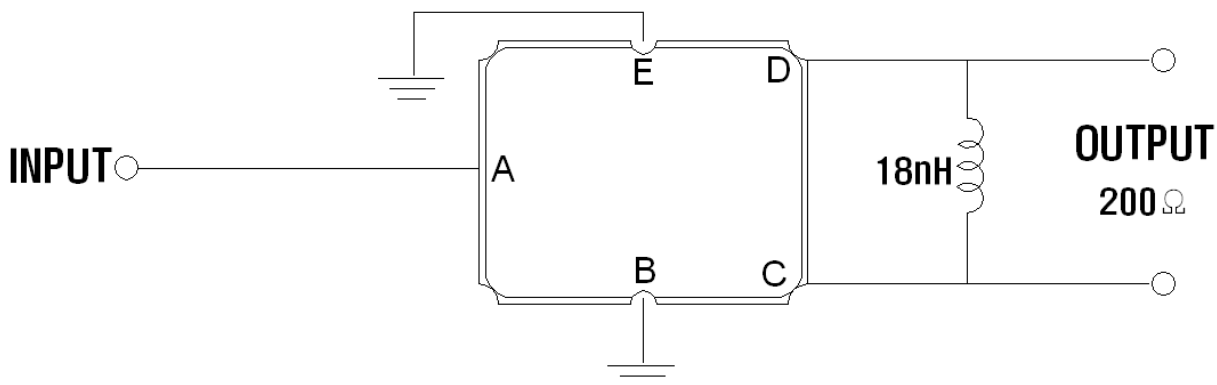
Package Dimensions



Marking Descriptions	
B	Series Number
Z	Date Code(Year+Month)

Pin Description	
B , E	Ground
A	In
C , D	Out

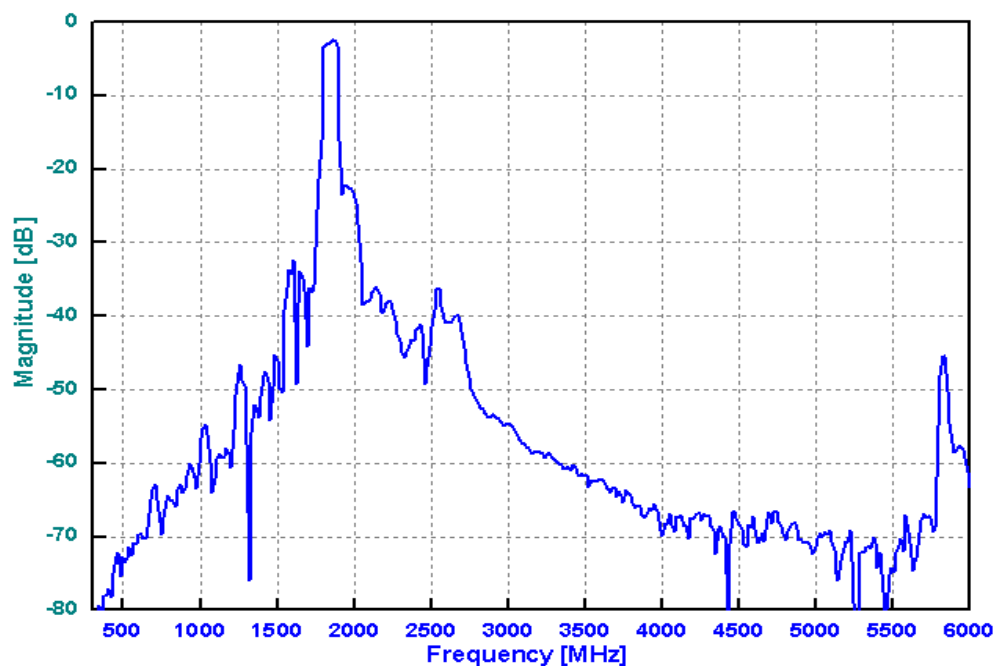
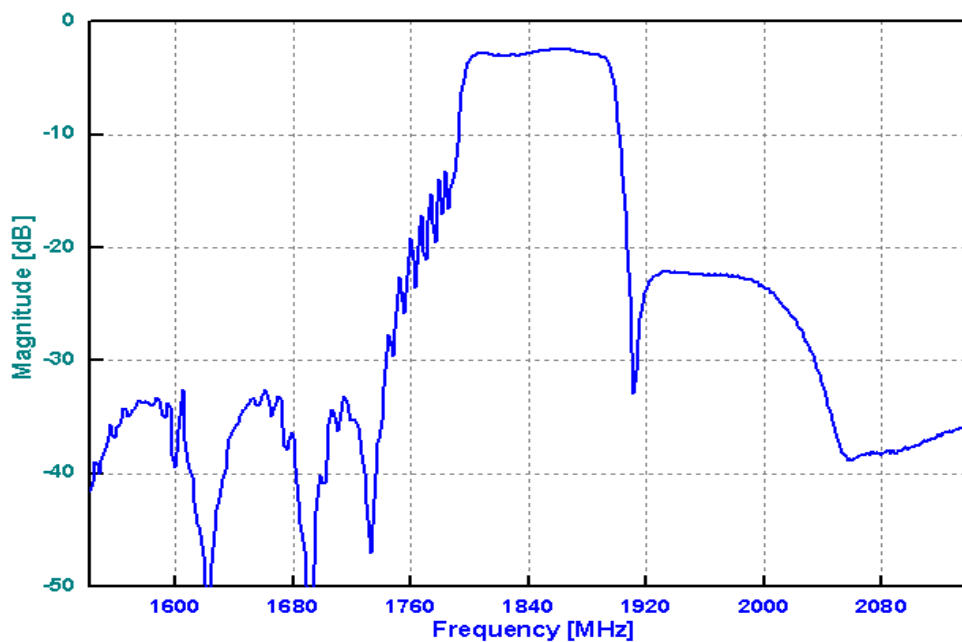
Testing Environment





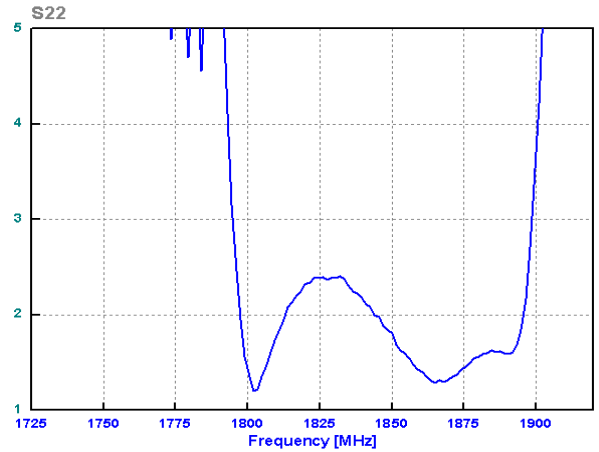
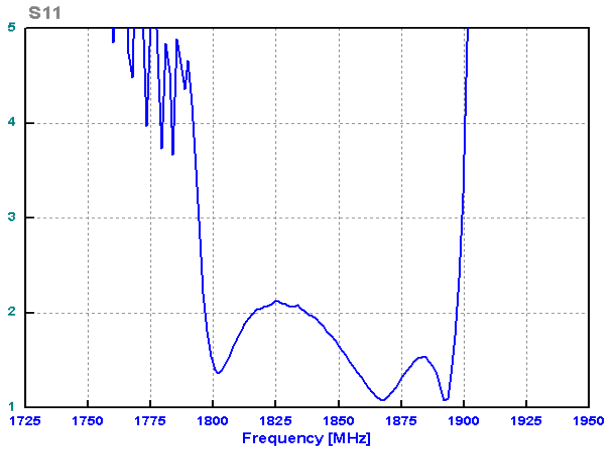
□ Frequency Characteristics

Frequency Response





VSWR



Smith Chart

